

CatExpress



Simple Copy Cataloging

CatExpress is a fast and easy Web-based copy cataloging solution. Its user-friendly interface was designed so your staff, new or veteran, can get more done, faster. And CatExpress gives them access to WorldCat, the world's most comprehensive bibliographic database.

*High-quality copy cataloging
that's fast and efficient*

CatExpress

Maximize your cataloging resources

Copy cataloging is a key activity for any library.

But it can be tedious for library veterans and intimidating for staff with less experience.

CatExpress is the perfect solution, balancing ease of use with the power of WorldCat, the most comprehensive database of bibliographic records available. Simply search for and retrieve records for copy cataloging from WorldCat and export them to your local system.

CatExpress helps you put materials on shelves faster than ever before. It requires very little training, and because it's Web-based, there's no software to install or maintain. OCLC provides detailed online tutorials and user FAQs to make using it even easier.

Just six simple steps

You can use CatExpress with little or no cataloging experience—all you need is an internet-enabled PC and a current Web browser. CatExpress delivers high-quality copy cataloging records in six basic steps:

1. **Log on** at <http://catexpress.oclc.org/>
2. **Find** a matching record in WorldCat
3. **Add** local data as necessary
4. **Click** the "Save to Catalog" button to attach your holdings
5. **Log off**
6. **Download** your records

You can also use CatExpress to print spine and pocket labels for the items you add to your collection.

Web tools that really work

CatExpress is just one part of OCLC Connexion, a suite of powerful, Web-based cataloging services. You can subscribe to the streamlined functionality of CatExpress alone, or toggle between it and the full-featured cataloging of Connexion. Web-based Dewey classification is also available for convenient reference when using CatExpress. To help you decide which solution is right for your library or institution, simply contact your OCLC regional service provider and request a consultation.

Subscription levels: it's your choice

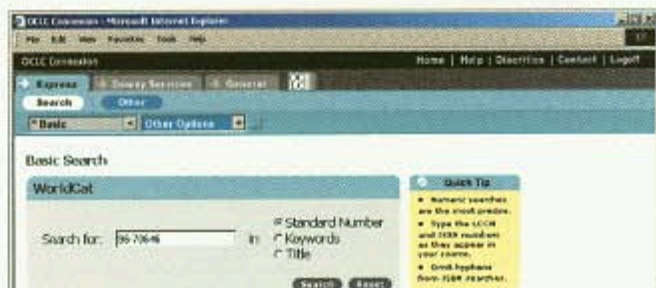
CatExpress is offered through your OCLC regional service provider. You can subscribe as an individual institution or as part of a group. Subscriptions last one year. For small institutions, our new 250-title subscription level is the perfect low-cost solution (just \$175 per year). Institutions with heavier copy cataloging needs can use CatExpress as part of Connexion, OCLC's comprehensive suite of cataloging services. In any case, you get unparalleled search capability and fast MARC record downloading.

Accuracy that saves you time

This is where the richness of WorldCat really pays off. With more than 57 million records for materials in all formats, from books to DVDs to e-journals and more, WorldCat provides remarkably inclusive search results. More than 9,000 libraries around the world contribute to WorldCat—some are your neighbors, others are a continent away. Many contribute records for the very materials you hope to match.

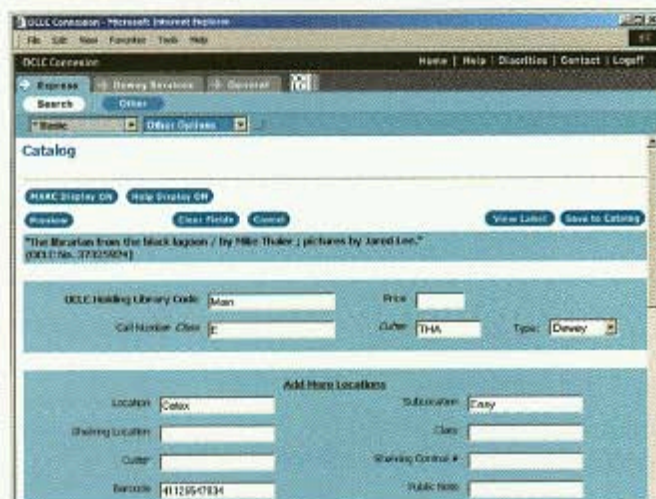
Designed for your needs

CatExpress is immediately accessible because it runs entirely through a standard Web browser. Once you've logged in, all buttons, choices and controls are contained in the browser window.



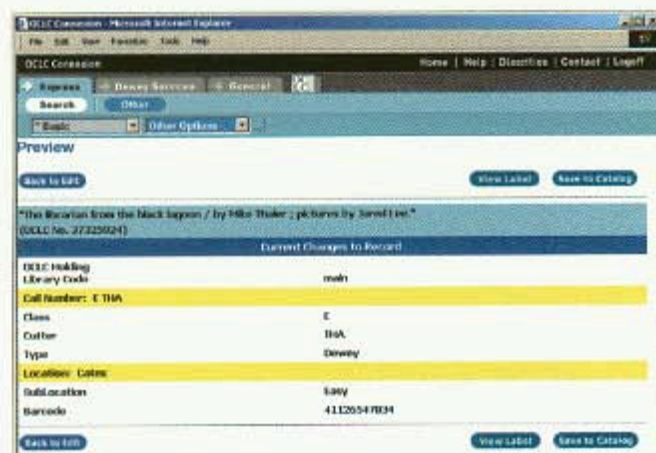
Perform a basic search

Begin by searching for a record by standard number, keywords or title. Contextual Quick Tips help answer questions fast. Then sort your result sets by title, author or date.



Add your information to the record

This editing screen shows how quickly and easily you can add local information to the record, such as call numbers, bar code numbers and local notes.



Preview your changes

The Preview page lets you do just that—make sure your changes are accurate. Then simply save to catalog, or return to editing. You can also view the resulting label for the item.

Librarians rave about the speed and value of CatExpress

Libraries vary in shape, size and purpose. Some are independent, serving specialized patrons; others are part of large systems attracting broad audiences with myriad interests. CatExpress is flexible enough to serve both ends of this spectrum, and all points in between.

The **Outagamie Waupaca Library System's** shared automation network (OWLSnet) includes 52 libraries in 10 Wisconsin counties. Seven of them share the copy-cataloging load using CatExpress. "CatExpress allows our libraries to expedite cataloging of their own materials," says Catalog Librarian Holly Ledvina. "This allows central cataloging to focus on original input."

"It is not an exaggeration to say that CatExpress has revolutionized our department."

Specialized libraries have also discovered how CatExpress adds efficiency and saves them money. "CatExpress is, dollar for dollar, one of the most valuable services we have in the library," says David Sweet, director of the **American Health Information Management Association's FORE Library** in Chicago, Ill. "It's one of those rare library tools that combines extraordinary ease of use with quick turnaround time, so our materials get on the shelf and into users' hands at minimal cost."

That experience is echoed by Richard Knutson, acting head of technical services at the **Perrot Memorial Library** in Old Greenwich, Conn. "It is not an exaggeration to say that CatExpress has revolutionized our department," he says. "Our turnaround time for most books has been cut to four days or less, from entry to shelf. Our patrons are pleased, and we now have time to keep up with other technical services." Another benefit he notes: With so many video and music CD records available in WorldCat, "CatExpress has cut down the turnaround time for these media by more than half."

CatExpress at a glance

Benefits

- **Speed up copy cataloging** with high hit rates from WorldCat—connect to more than 57 million records that represent all material formats in over 450 languages
- **Enable more staff** to perform copy cataloging using an intuitive, Web-based interface
- **Easier copy cataloging** for popular and hard-to-find items

Features

- Search and retrieve high-quality MARC records
- Basic editing of bibliographic records
- Print spine and pocket labels for items in your collection
- Download OCLC-MARC records
- Find quick and easy online documentation and context-sensitive help

Requirements

- Current generation Web browser (Netscape Navigator 7 or higher or Microsoft Internet Explorer 5.0 or higher)
- MARC-based library automation system (CatExpress libraries use a variety of local systems, including Winnebago, Dynix, Follett, DRA, Epixtech and TLC; other systems may work with CatExpress as well)
- OCLC Cataloging Label Program to print labels (available at no charge from the OCLC Web site at www.oclc.org/label/)

Recent Enhancements

- If your library uses the new OCLC Connexion service, you can easily toggle between full-featured cataloging and the streamlined functionality of CatExpress

Web Resources

- www.oclc.org/catexpress/about/success/
Success stories from librarians that use CatExpress
- www.oclc.org/support/training/catexpress/tutorial/
Helpful interactive tutorial for CatExpress
- www.oclc.org/services/cataloging/
Additional OCLC cataloging services that enhance library productivity

Related Services

- Create, send, manage and track ILL requests and document orders more quickly with **OCLC WorldCat Resource Sharing**
- Optional **WebDewey** and **Abridged WebDewey** services, available by subscription, bring classification reference to your fingertips

For detailed information on CatExpress, complete with answers to frequently asked questions and a Web tutorial, visit the OCLC Web site at:

www.oclc.org/catexpress/

For pricing information and to order CatExpress, call OCLC Library Services at 1-614-764-6251 or contact your OCLC regional service provider directly.

www.oclc.org/contacts/regional/

The world's best cataloging resource

With more than 60 million records, WorldCat is the world's most comprehensive bibliographic database. Updated at a rate of nearly one new record every 10 seconds, WorldCat contains bibliographic records and holdings information contributed by more than 8,500 libraries around the world. The new Open WorldCat Program makes the items in library collections—physical and digital, popular or special—discoverable by people searching the internet. Learn more about Open WorldCat at www.oclc.org/worldcat/open.



Local service, global resources

OCLC helps libraries in more than 90 countries provide users with bibliographic, abstract and full-text information when and where they need it. OCLC and its member libraries cooperatively produce and maintain WorldCat, the world's most comprehensive bibliographic database. Please contact us to learn more about OCLC in your part of the world.

Asia and the Pacific Region

1-614-764-6189
fax: 1-614-764-4331
asia_pacific@oclc.org

Canada

1-888-658-6583
fax: 1-450-658-6231
canada@oclc.org

Europe and Southern Africa

44 121 456 4656
fax: 44 121 456 4680
www.oclc.org

Middle East and Northern Africa

1-614-764-6470
fax: 1-614-718-7316
www.oclc.org/middleeast/en/

Latin America and the Caribbean

1-614-761-5196
fax: 1-614-718-1026
america_latina@oclc.org

United States

1-800-848-5878, ext. 6251
1-614-764-6251
fax: 1-614-764-0155
oclc@oclc.org

www.oclc.org

The following OCLC product and service names are trademarks or service marks of OCLC Online Computer Library Center, Inc.: OCLC, WorldCat, CatExpress, Dewey, WebDewey and Connexion. In addition, the WorldCat symbol and OCLC symbol are service marks of OCLC. Third-party product and service names are trademarks or service marks of their respective companies. OCLC grants permission to photocopy this publication as needed.

PRM219B 0412/11364Q 5M, OCLC